

# MAPCONVERTER.APP

Jeroen Verdonschot  
13-10-2022



architect



3d visuals



computer nerd





1

2

3

4

Utrecht

BGT: 1 selected

kadaster:

ruimtelijke plannen:

3d lagen: 6 selected

BAG3D PDOK3D(BETA)

LOD 22

LOD 22 Z 0

LOD 13

LOD 13 Z 0

LOD 12

LOD 12 Z 0

select all select none

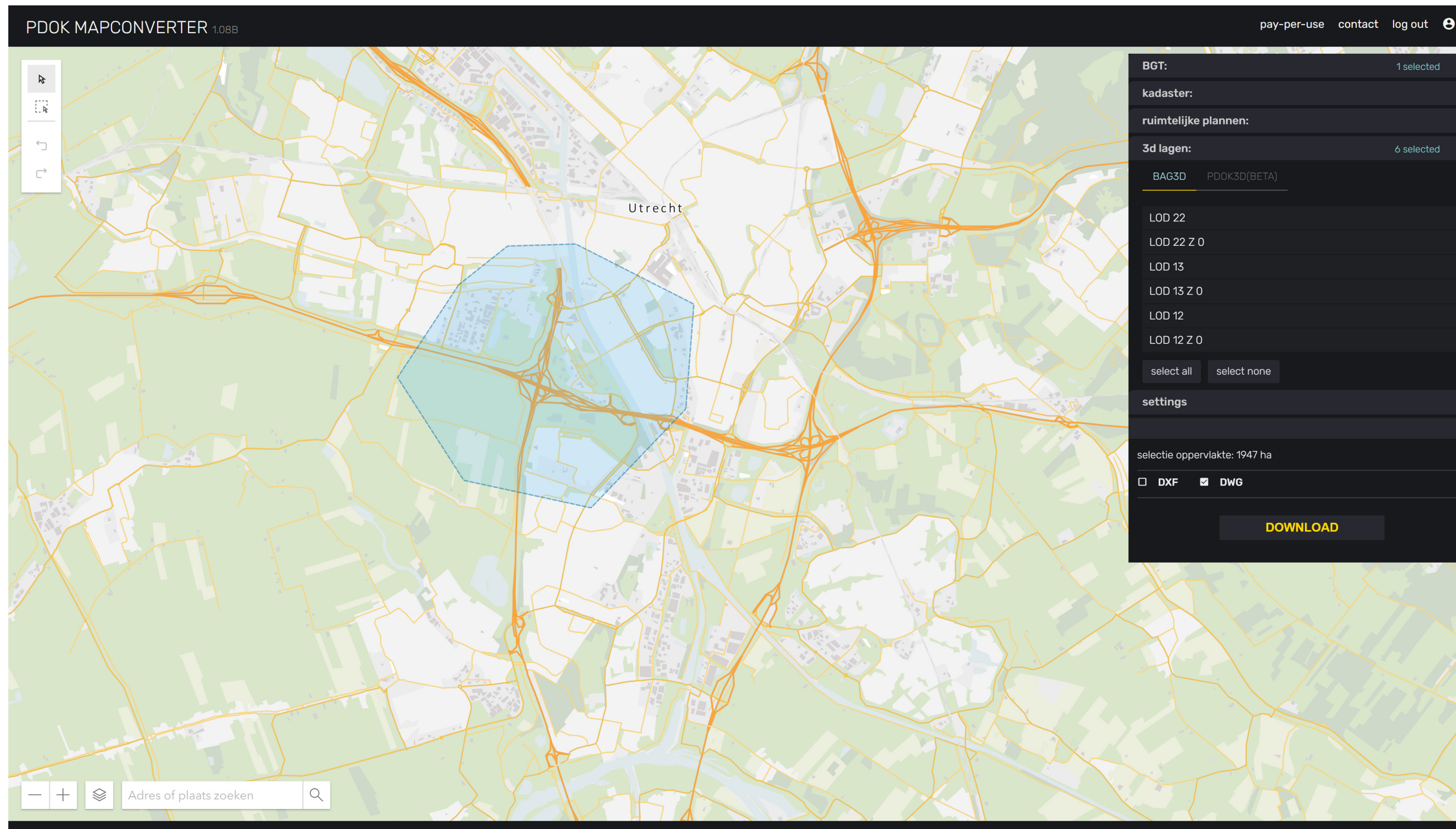
settings

selectie oppervlakte: 1947 ha

DXF  DWG

**DOWNLOAD**





## Het doel van de app

- converteren van PDOK GIS data naar CAD
- eenvoudig
- betaalbaar

## Verbeterpunten van de app

- stabiliteit van files > 700mb
- toelichting/tooltips hoe de app te gebruiken
- pdok3d workflow verbeteren

## De vragen van gebruikers

“Blijft het werken? Want de app is een belangrijk onderdeel geworden van onze workflow.”

“Kan de mapconverter ook KLIC-meldingen downloaden?”

“Kun je ook 3d bomen toevoegen, zoals de bag3d?”

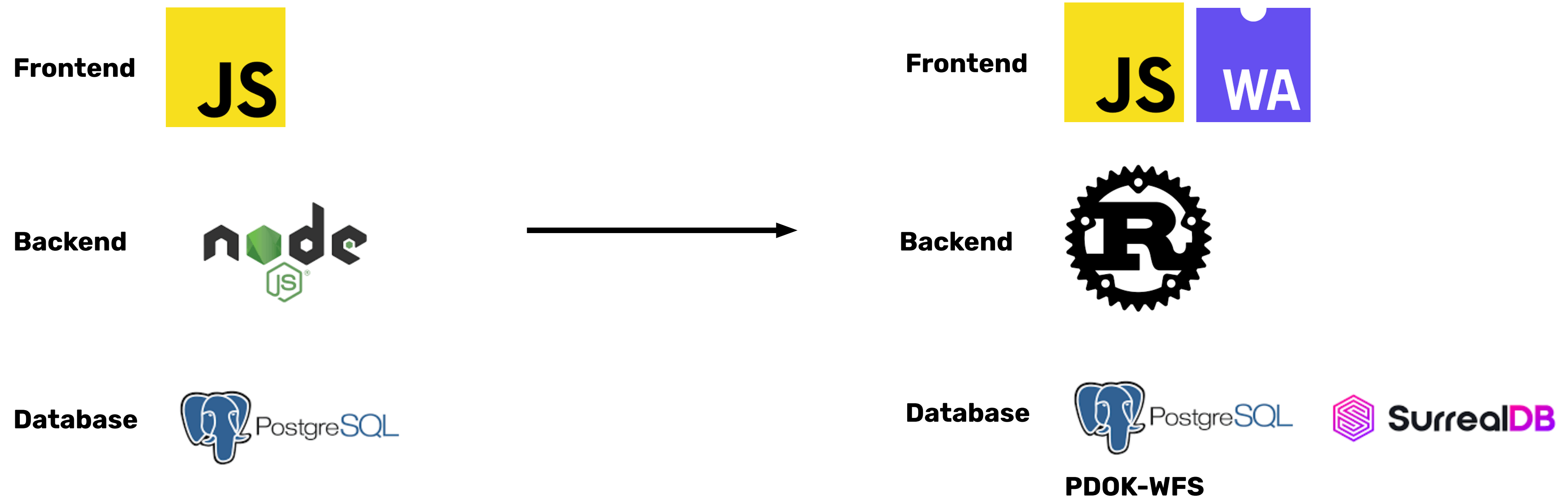


goedkoop en eenvoudig

Identificer	Providers	Created ↓	Signed In	User UID
schr0161@hz.nl	✉	Oct 12, 2022	Oct 12, 2022	rXDaOKRqTIMTrxBSh3BWAH1iQhI2
jans0305@hz.nl	✉	Oct 12, 2022	Oct 12, 2022	Yicl4i3cytQaelRkWAmlLYQFbWi2
hehe0001@hz.nl	✉	Oct 12, 2022	Oct 12, 2022	Bxinm06LcwYoP3ZL5TKicq493Sz1
neli0012@hz.nl	✉	Oct 12, 2022	Oct 12, 2022	l0BZqZndUKTbo31aVzexpqliEmY2
mari0090@hz.nl	✉	Oct 12, 2022	Oct 12, 2022	hBo7ipyQDFPYBvraHiBvQkOafzW2
grg0001@hz.nl	✉	Oct 12, 2022	Oct 12, 2022	tGru12NNOfTEIA7kwD0fTUpbypF3
aarn0025@hz.nl	✉	Oct 12, 2022	Oct 12, 2022	9DWX9Mo2lmRM6RnLtYnjsLbKG...
geta0002@hz.nl	✉	Oct 12, 2022	Oct 12, 2022	nyqjqyzkSLgAOwrTGpEBbAdRvNu2
baar0035@hz.nl	✉	Oct 12, 2022	Oct 12, 2022	KhZBy3W1cdXVfi9QilQZCqNtzP43
holl0064@hz.nl	✉	Oct 12, 2022	Oct 12, 2022	59XUto0M9TZQKYp9k1jOIUSwtse2
bakk0123@hz.nl	✉	Oct 12, 2022	Oct 12, 2022	42UWuT6YOTM0dX62z6Ywsr2f4e...
veer0034@hz.nl	✉	Oct 12, 2022	Oct 12, 2022	l2pp8Q7ZYgXSU1lLbQCJzstLi1J2
die0004@hz.nl	✉	Oct 12, 2022	Oct 12, 2022	kZG9BMy4vBfp7wUAm4W0eudwk...
goen0006@hz.nl	✉	Oct 12, 2022	Oct 12, 2022	f5NBZzyluUPlg2wKfhOSblRj1fk2
rott0022@hz.nl	✉	Oct 12, 2022	Oct 12, 2022	kjVo7rKhAzTBbF3mFPnhB38n3p...
verm0176@hz.nl	✉	Oct 12, 2022	Oct 12, 2022	6QFZ9hvsSCU2PdbWPTW1Jx9gB...
guil0014@hz.nl	✉	Oct 12, 2022	Oct 12, 2022	oqlGndnvdaUDJZ5Wn1loZPyrIso2
orma0003@hz.nl	✉	Oct 12, 2022	Oct 12, 2022	EMBzbXtdpqVxULZ3Xmdn9DIV2O...
fouw0007@hz.nl	✉	Oct 12, 2022	Oct 12, 2022	o0gnQWdHJffr7451JVuXu8UHA9...
jwin@hillen.nl	✉	Oct 11, 2022	Oct 11, 2022	ul2yuinXqoYkOFYdMvMsdvVKIx2

stabiliteit van files > 700mb

“Blijft het werken? Want de app is een belangrijk onderdeel geworden van onze workflow.”





"Kun je ook 3d bomen toevoegen, zoals de bag3d?"



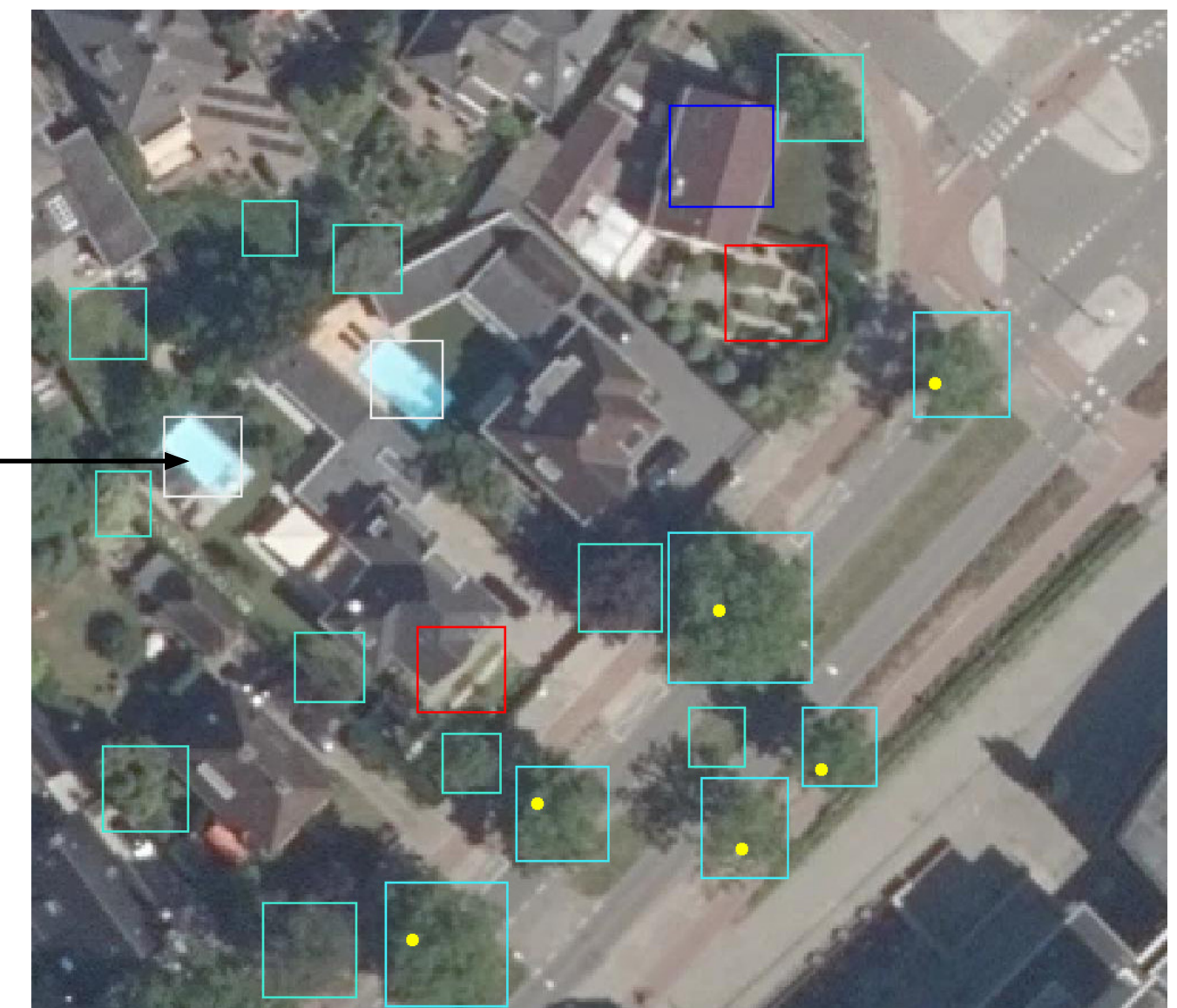
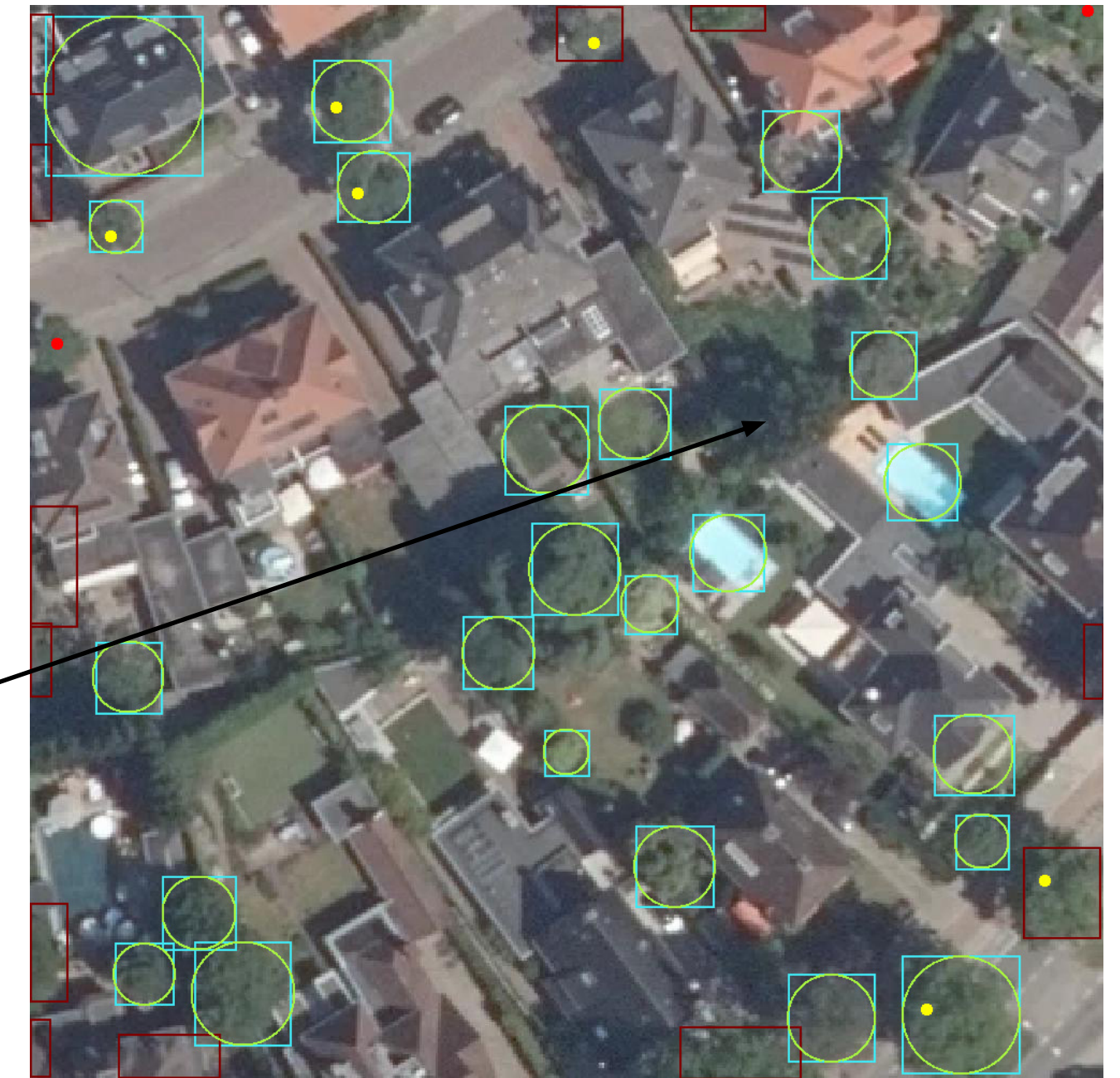
geen boom, server denkt van wel.

niet alle bomen worden herkend

8x meer bomen dan in de bgt staan

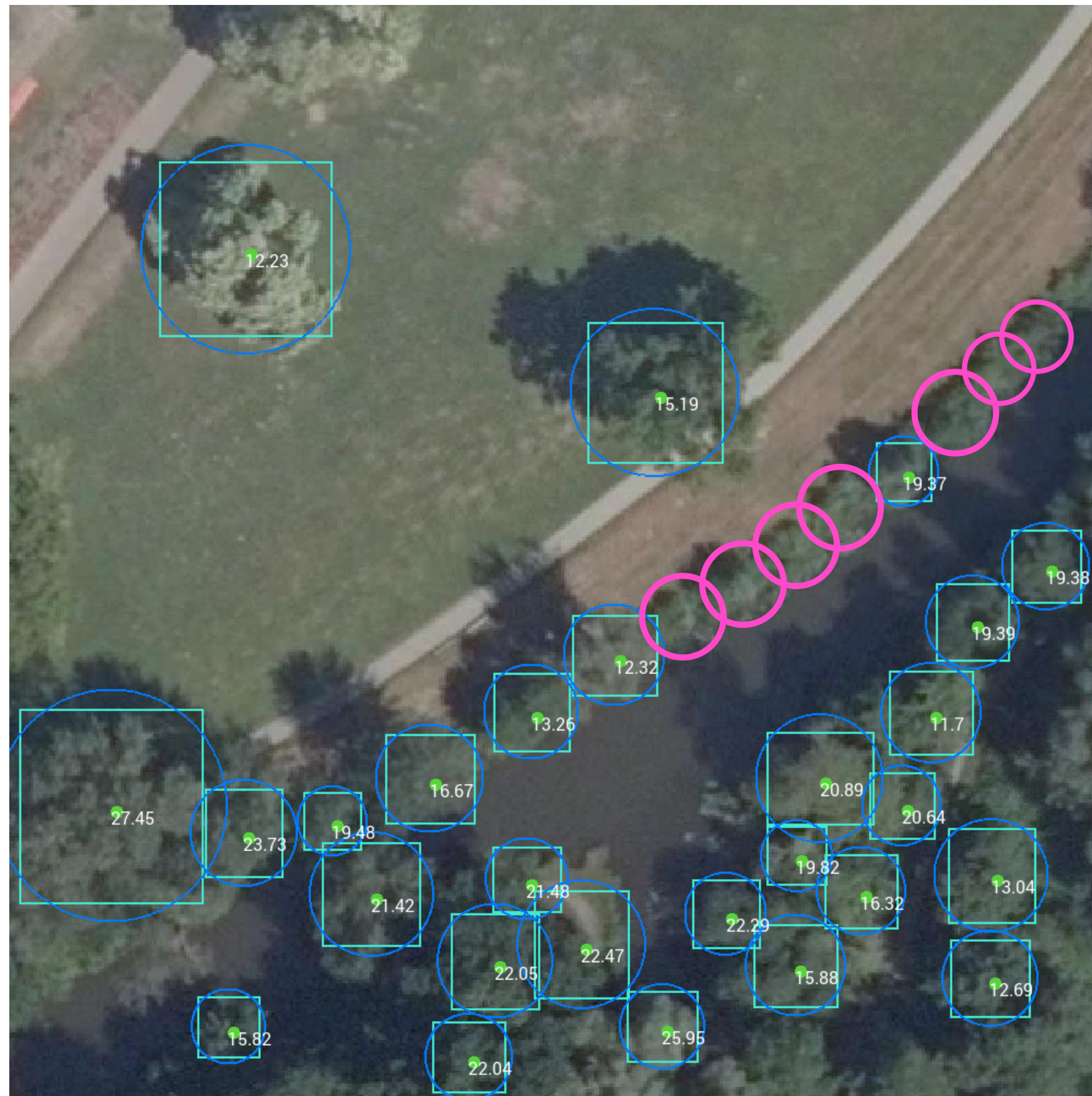
90 procent succes rate\*

daken en zwembaden worden soms ook als bomen gezien.



de app - treeserver

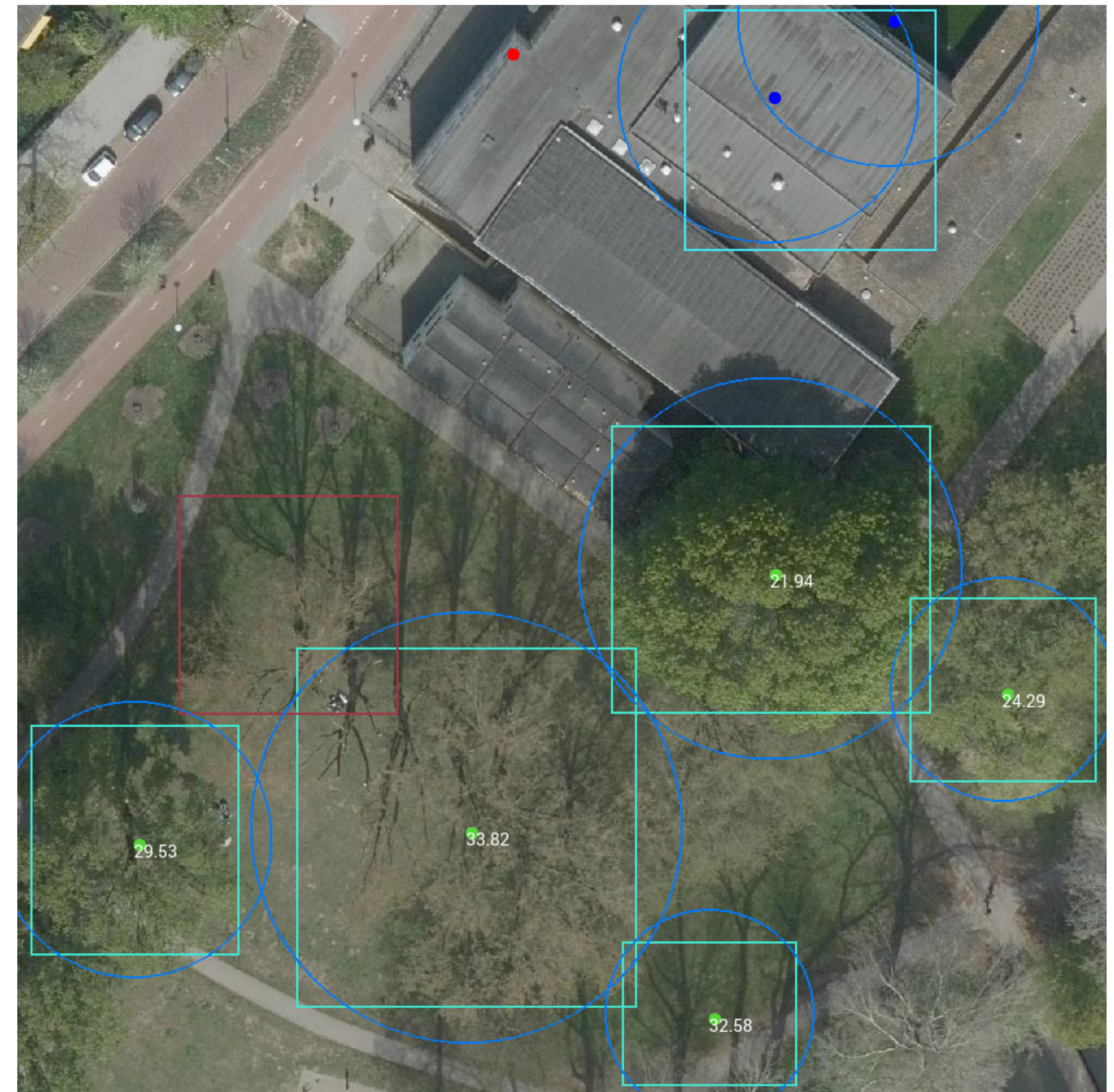




```

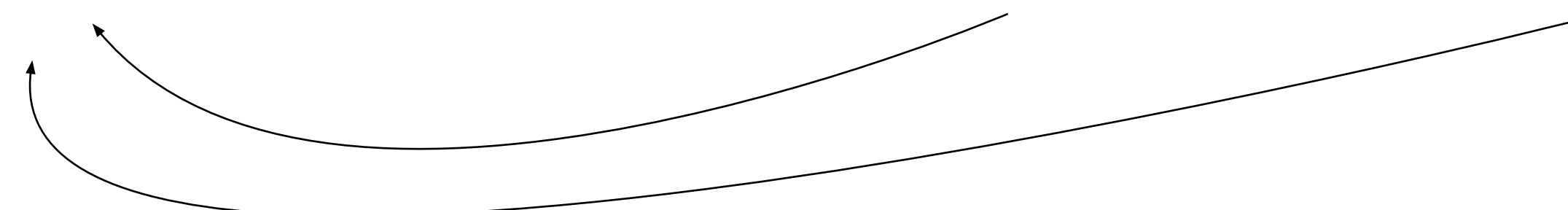
{
  "xmin": 3512.0,
  "ymin": 1800.0,
  "xmax": 3598.0,
  "ymax": 1890.0,
  "label": "Tree",
  "score": 0.8813475966,
  "rgb_median": [
    86,
    96,
    91
  ],
  "hsv_medians": [
    150,
    10,
    38
  ]
},
{
  "xmin": 3469.0,
  "ymin": 2009.0,
  "xmax": 3543.0,
  "ymax": 2084.0,
  "label": "Tree",
  "score": 0.8360011578,
  "rgb_median": [
    94,
    111,
    96
  ],
  "hsv_medians": [
    127,
    15,
    44
  ]
},
{
  "xmin": 153.0,
  "ymin": 1067.0,
  "xmax": 272.0,
  "ymax": 1189.0,
  "label": "Tree",
  "score": 0.7894246578,
  "rgb_median": [
    72,
    86,
    81
  ],
  "hsv_medians": [
    159,
    16,
    34
  ]
},
{
  "xmin": 828.0,
  "ymin": 3640.0,
  "xmax": 919.0,
  "ymax": 3699.0,
  "label": "Tree",
  "score": 0.768547734,
  "rgb_median": [
    110,
    119,
    106
  ],
  "hsv_medians": [
    102,
    11,
    47
  ]
},
}

```



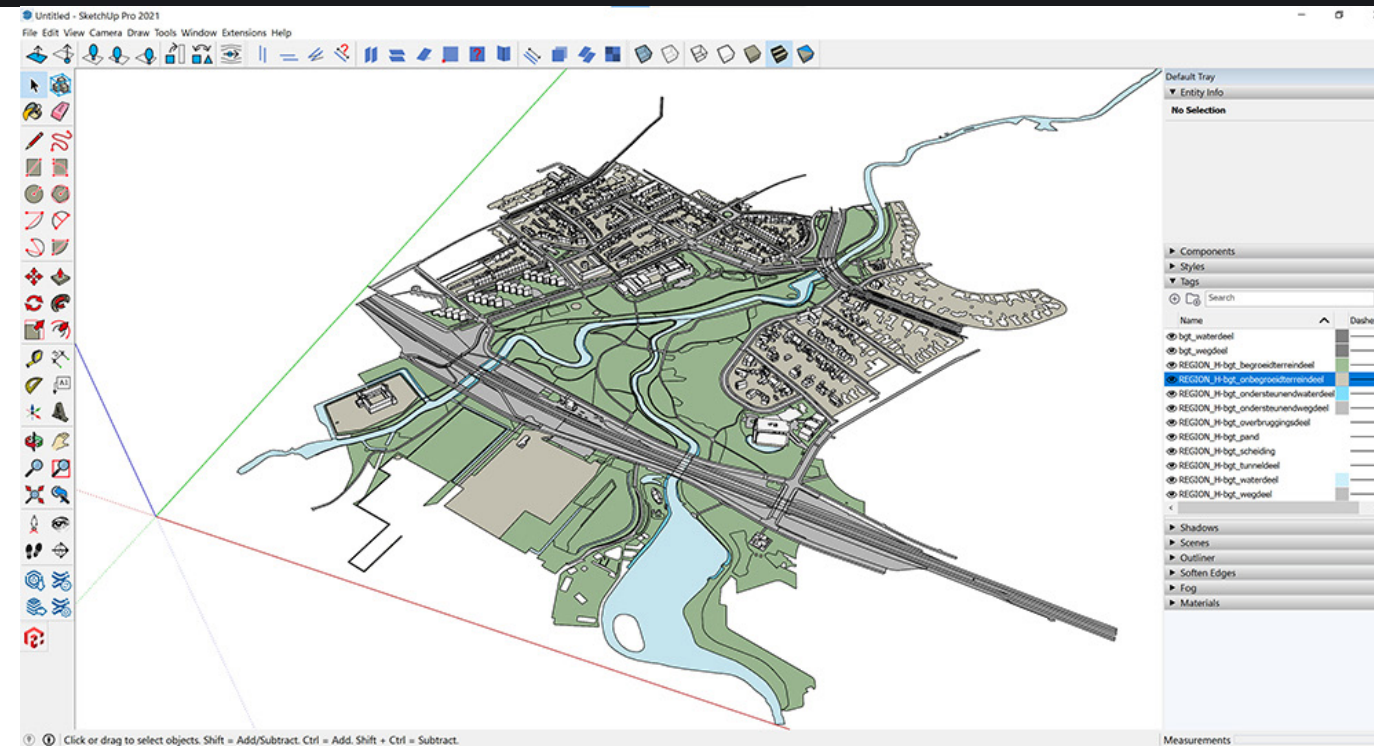
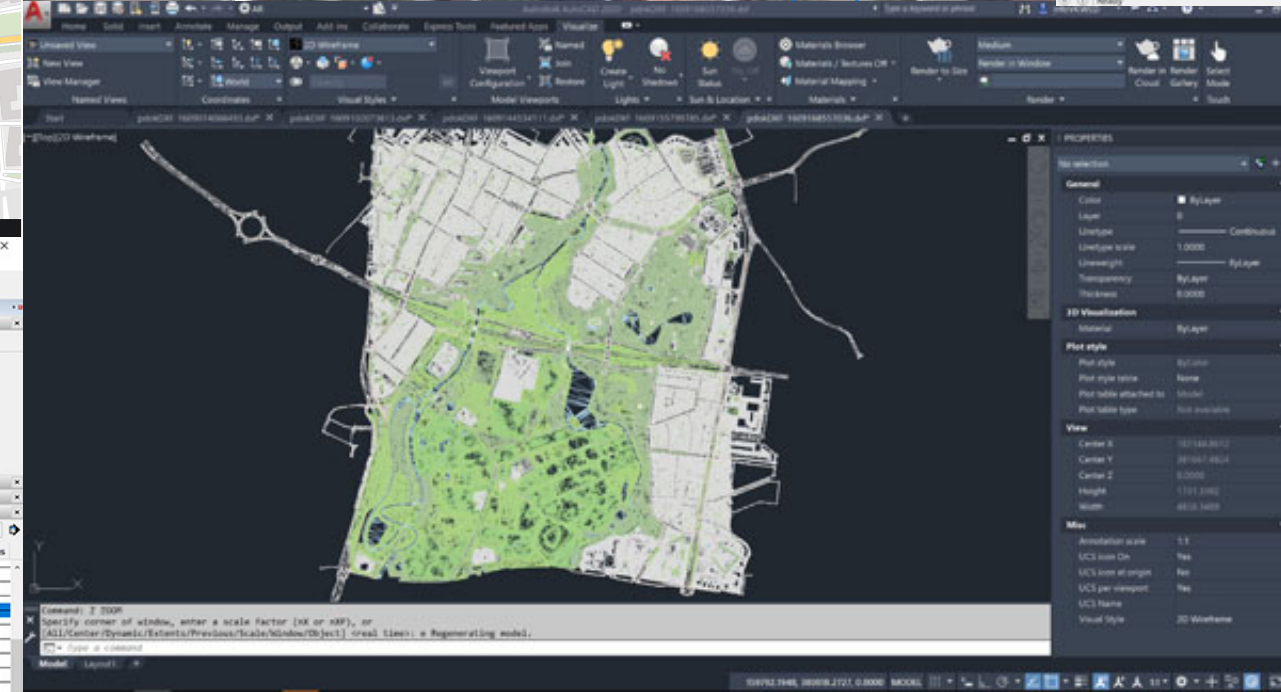
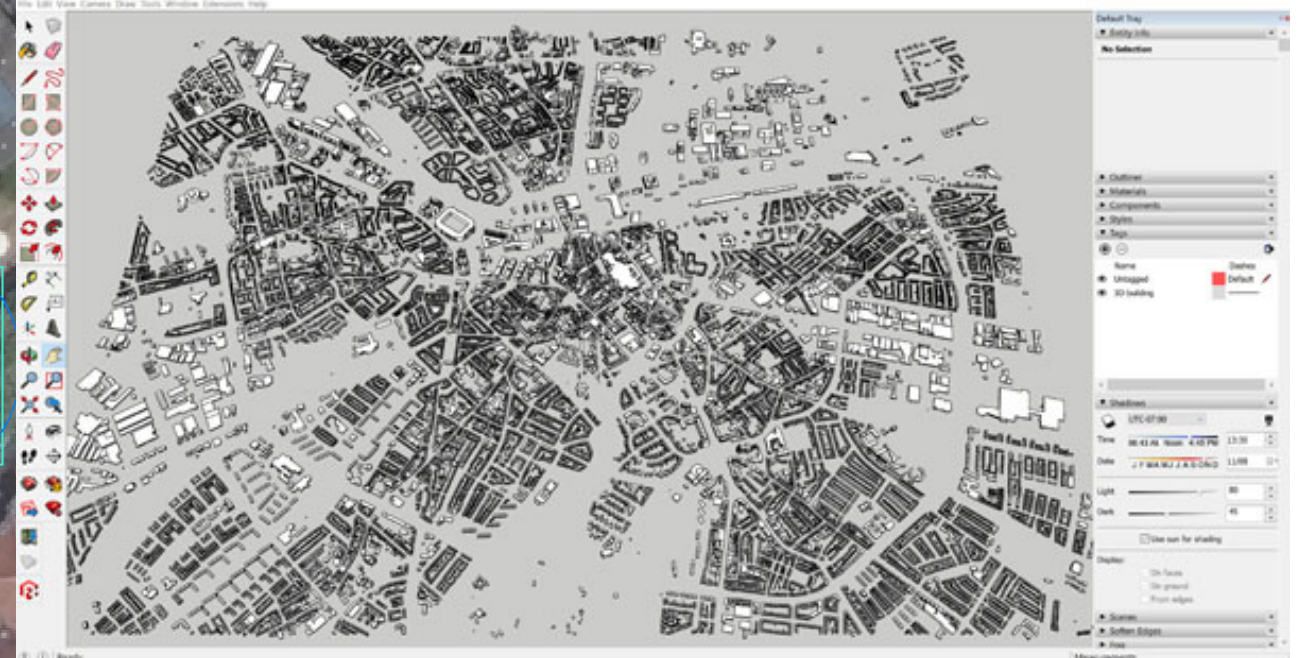
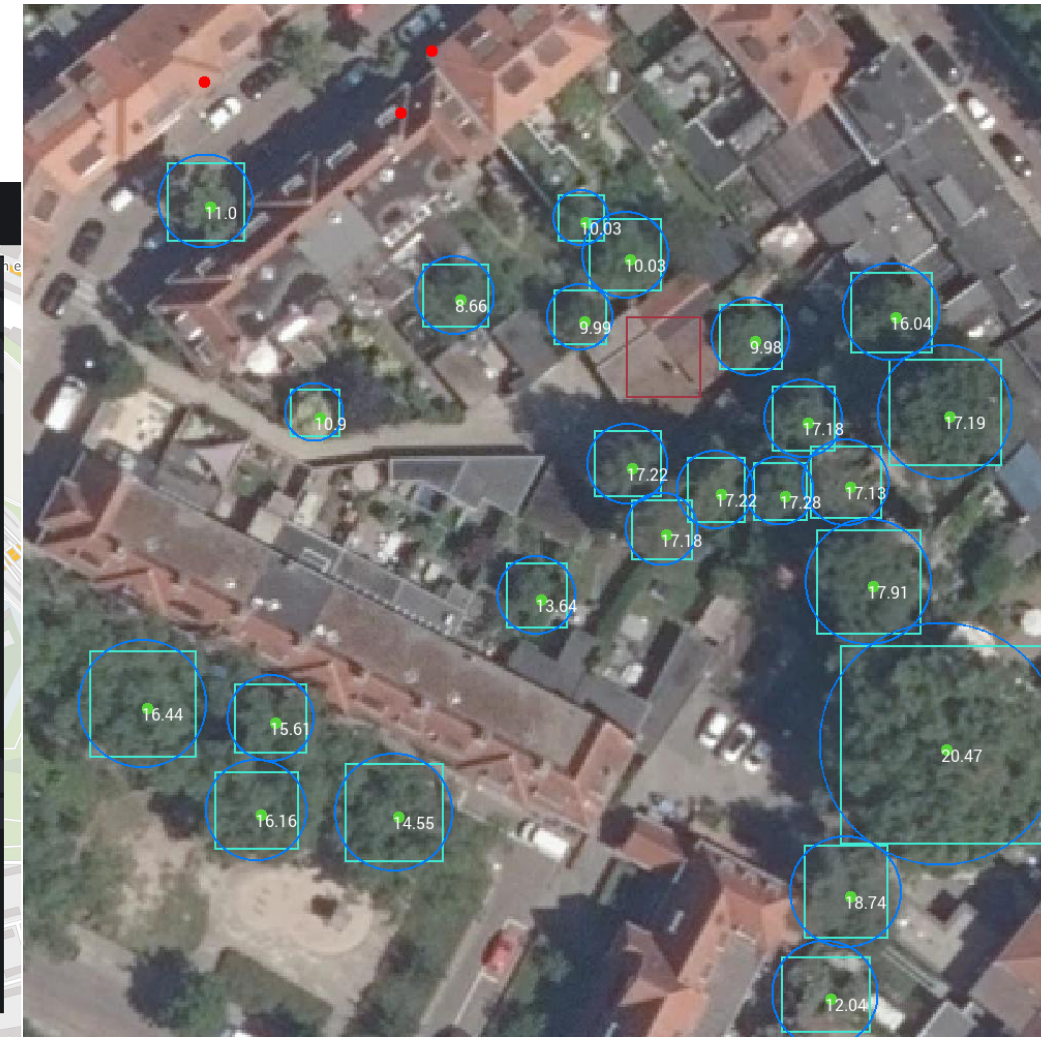
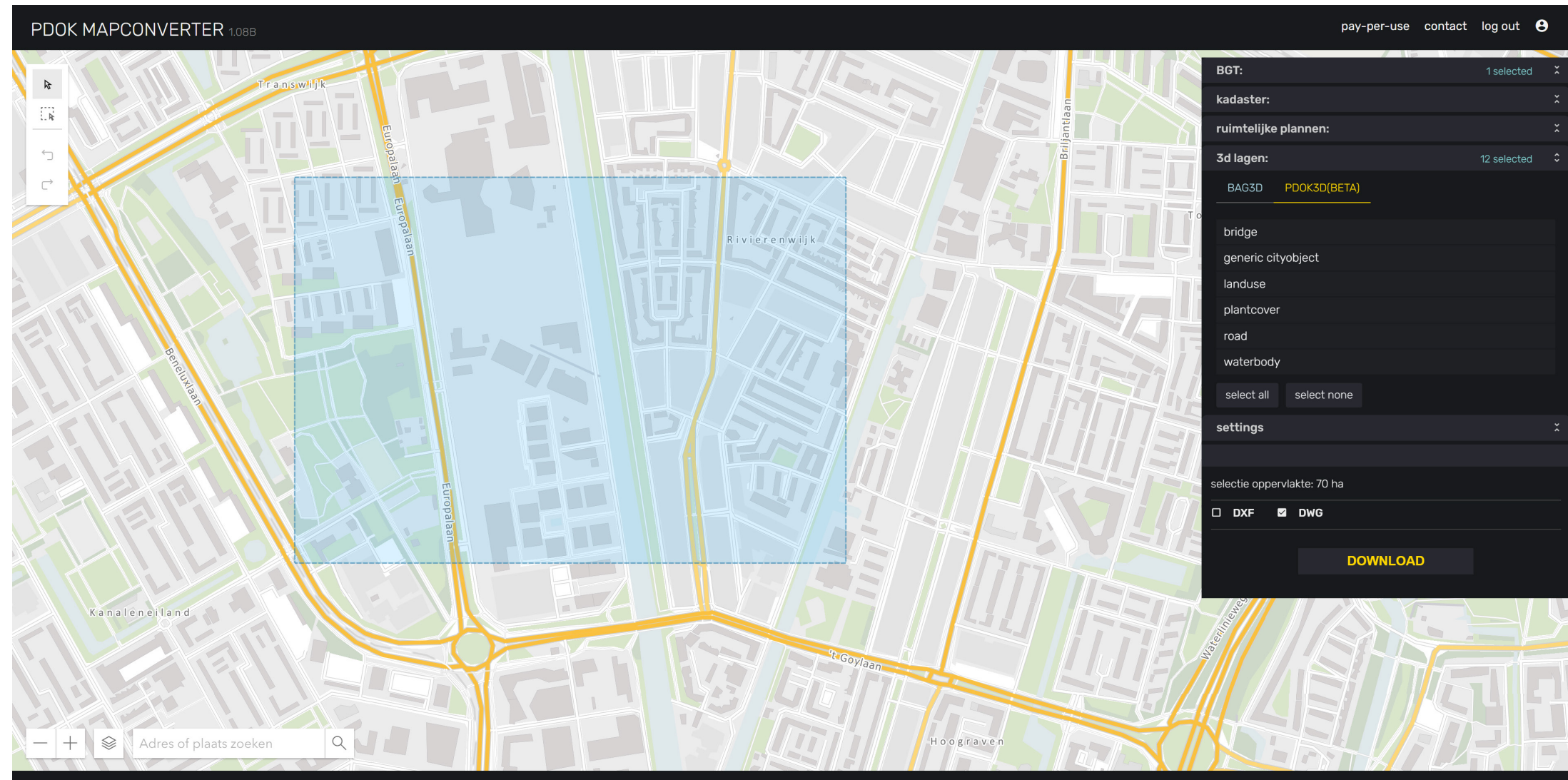
**Treeserver Flow**

ML analyse van bomen → editor → pdok-dataset → pdok-winter-dataset



de app - treeserver





MAPCONVERTER.APP